

Setting vendor-neutral
software standards, and
enabling distributed,
enterprise-wide interoperability

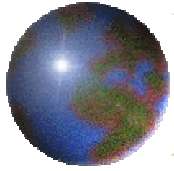
Search

OMG Enterprise Collaboration Architecture (ECA)

Cory Casanave
Data Access Technologies
www.d-a-t.com

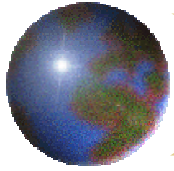


Creating A Single Global Electronic Market

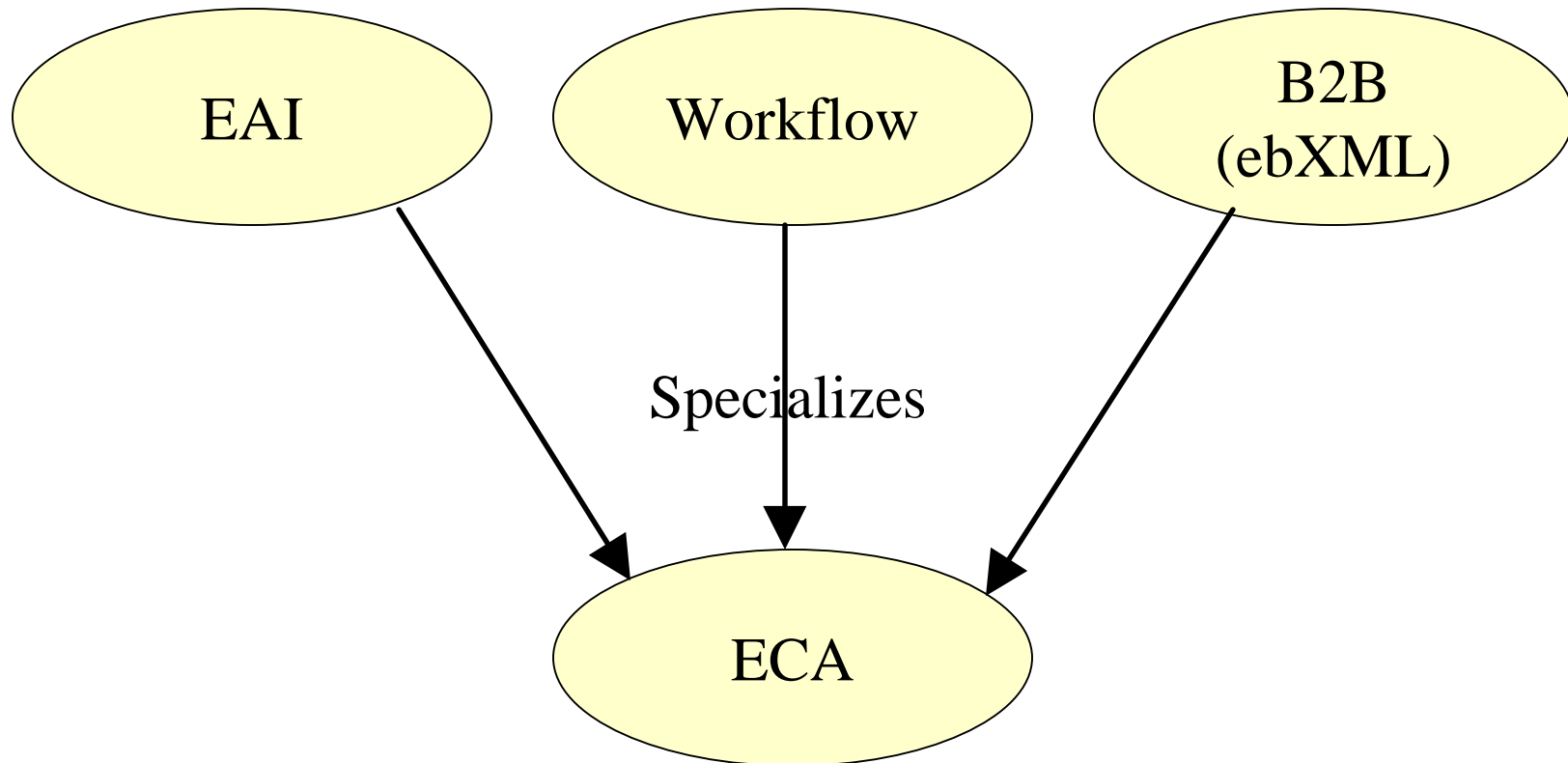


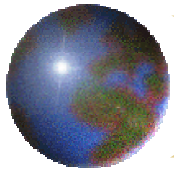
What is in ECA?

- Patterns
- Process
- Entities
- Events
- Component Collaboration Architecture (CCA)
 - Recursive Components
 - Data flow & Protocols
 - Composition
 - Document Model
- All based on UML



ECA as a common architecture





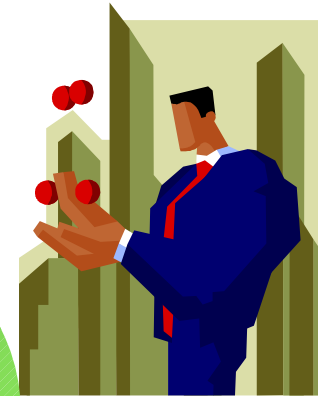
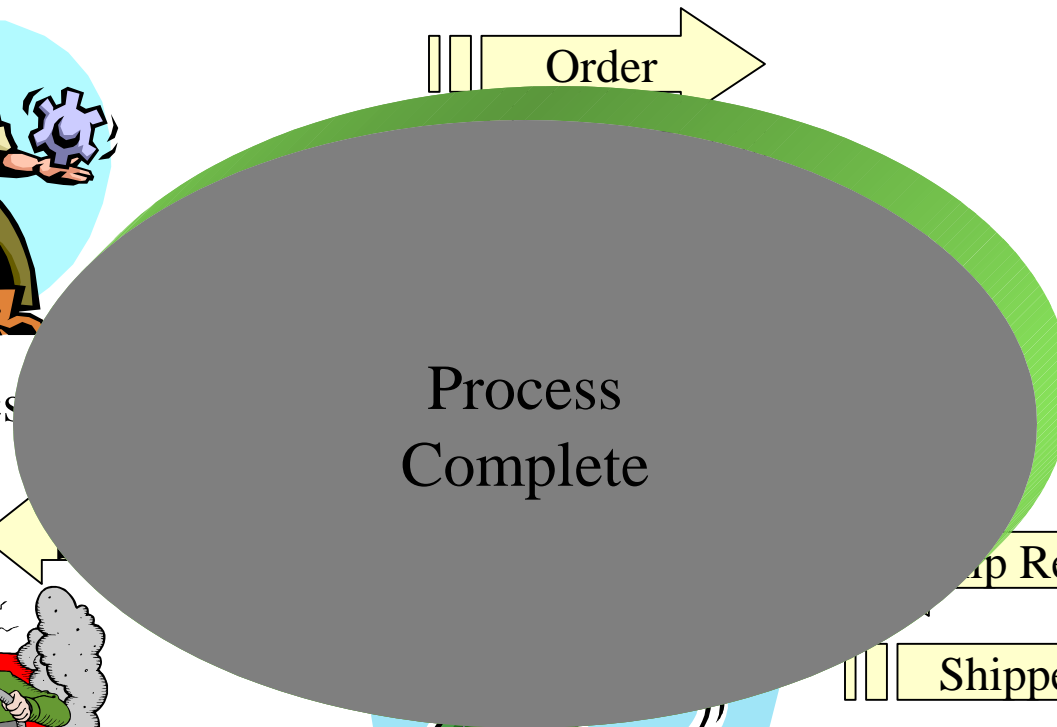
The Marketplace Example



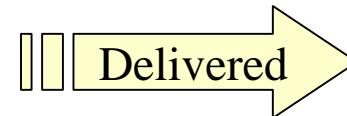
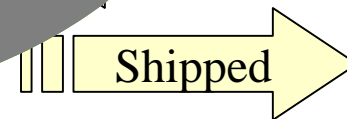
Mechanics
Buyer



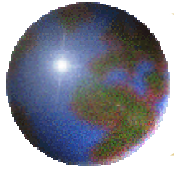
Physical
Delivery



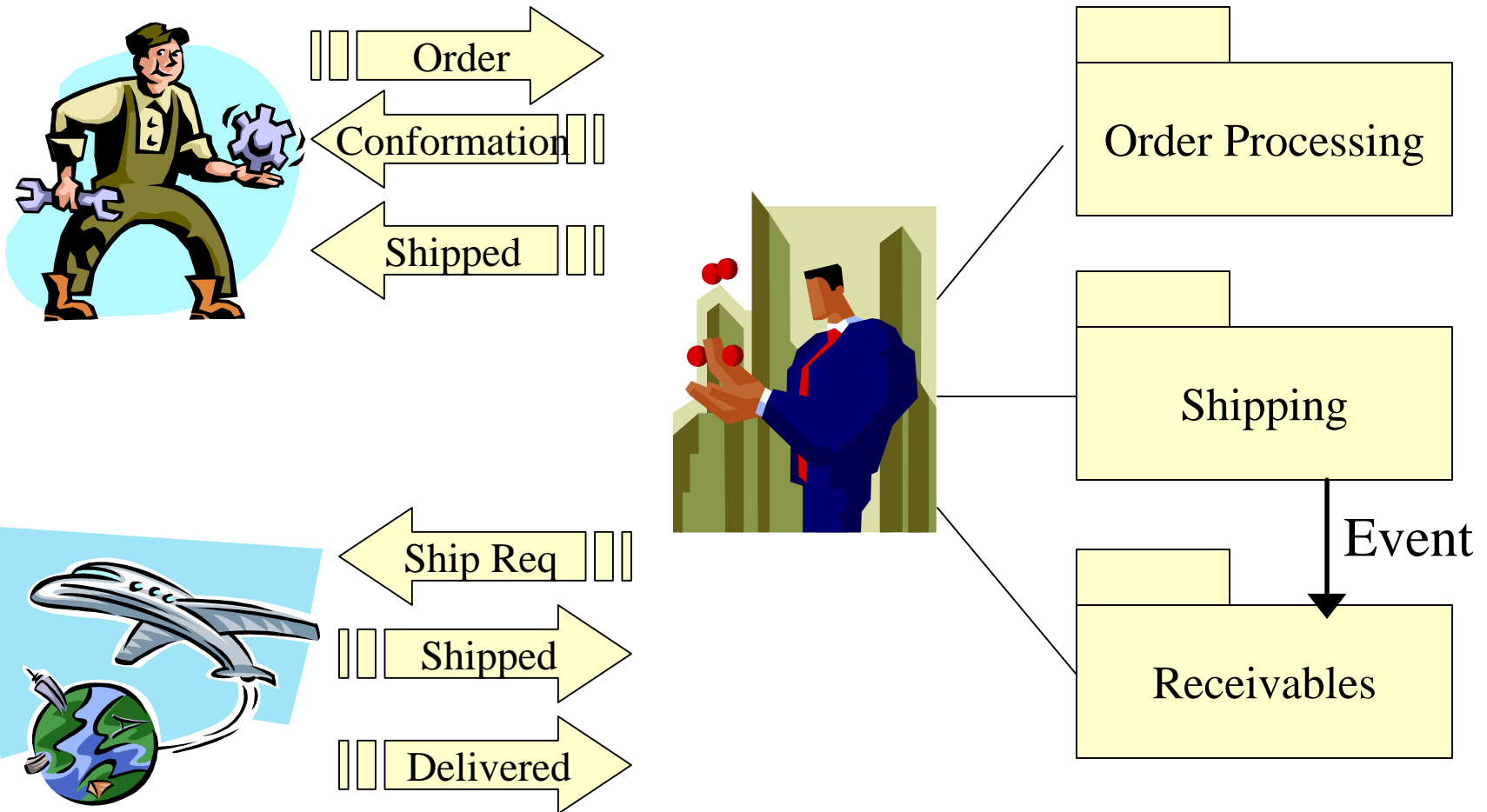
Acme Industries
Seller

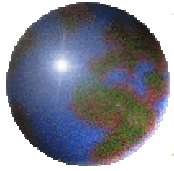


GetItThere Freight
Shipper

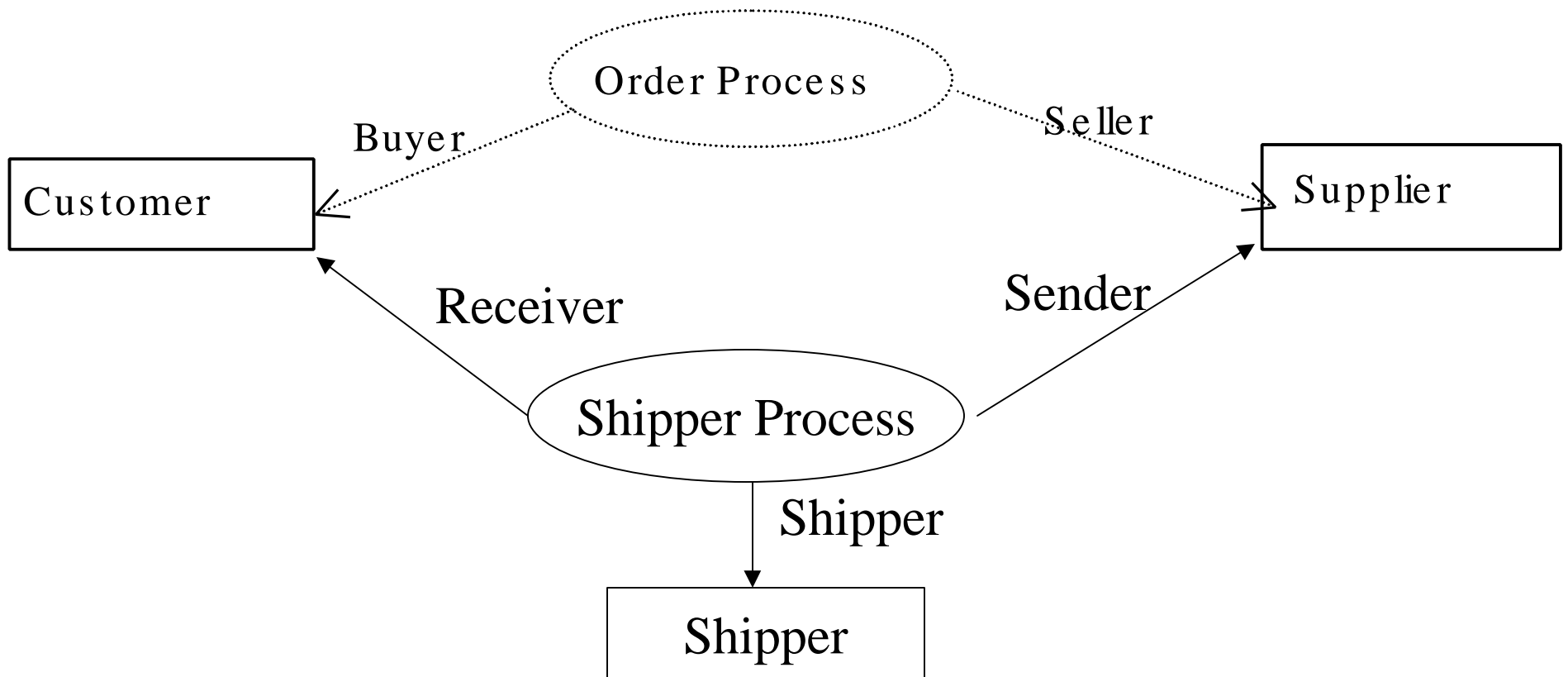


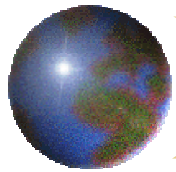
The Seller's Detail



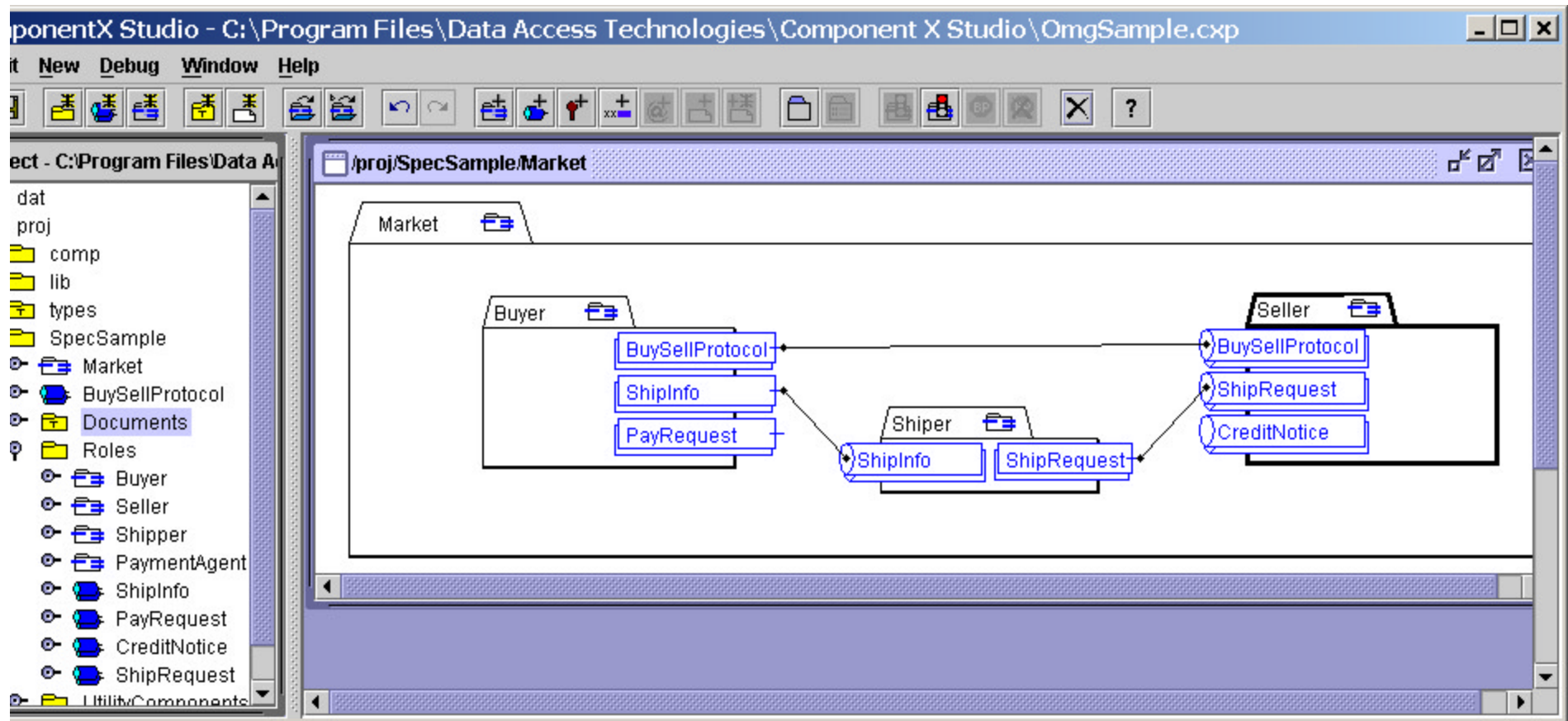


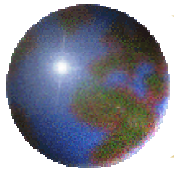
Apply Order Process Pattern



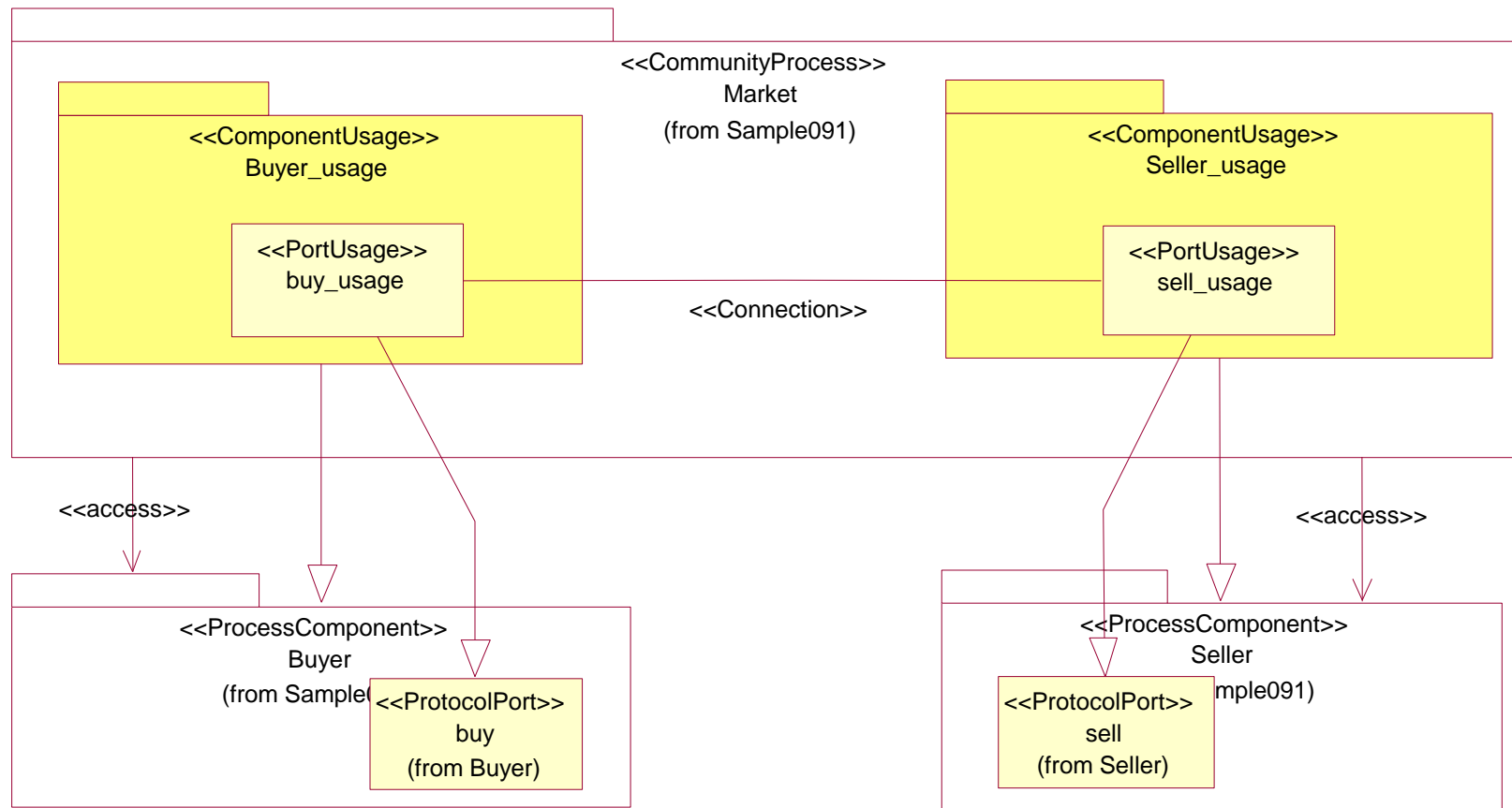


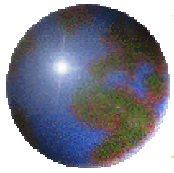
Community Process



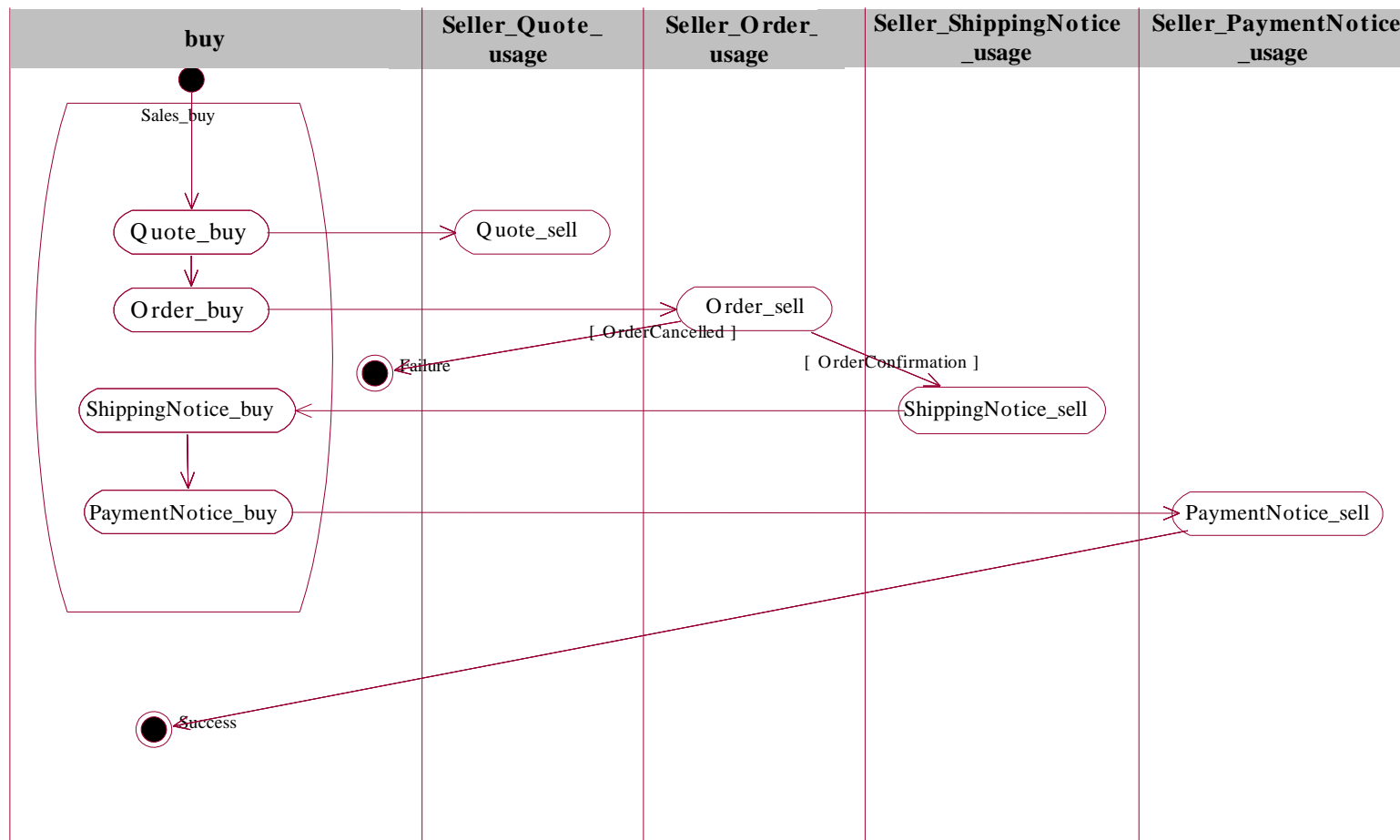


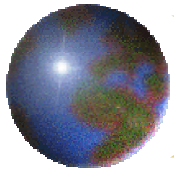
UML Notation



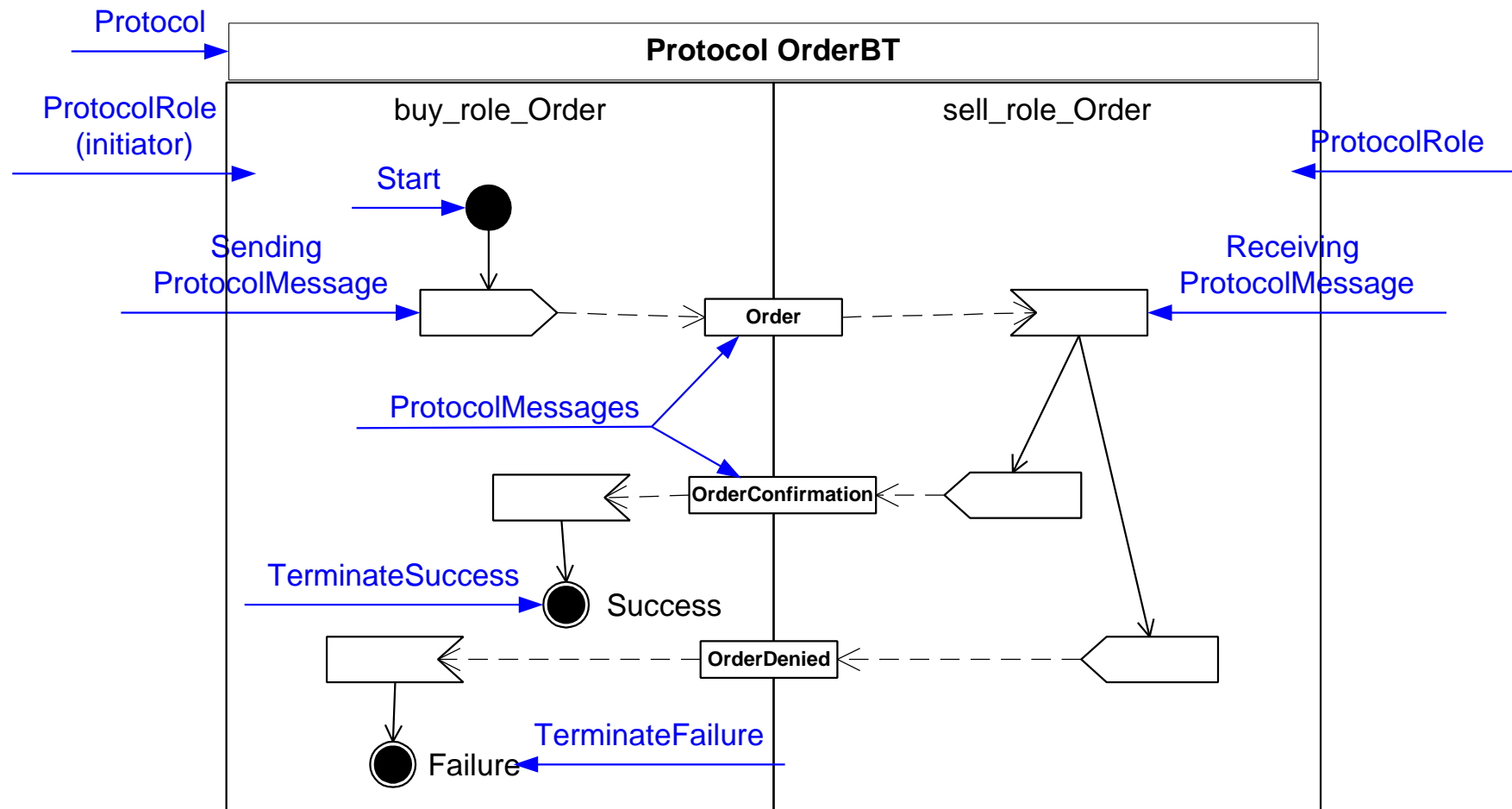


Activity Diagram for Process



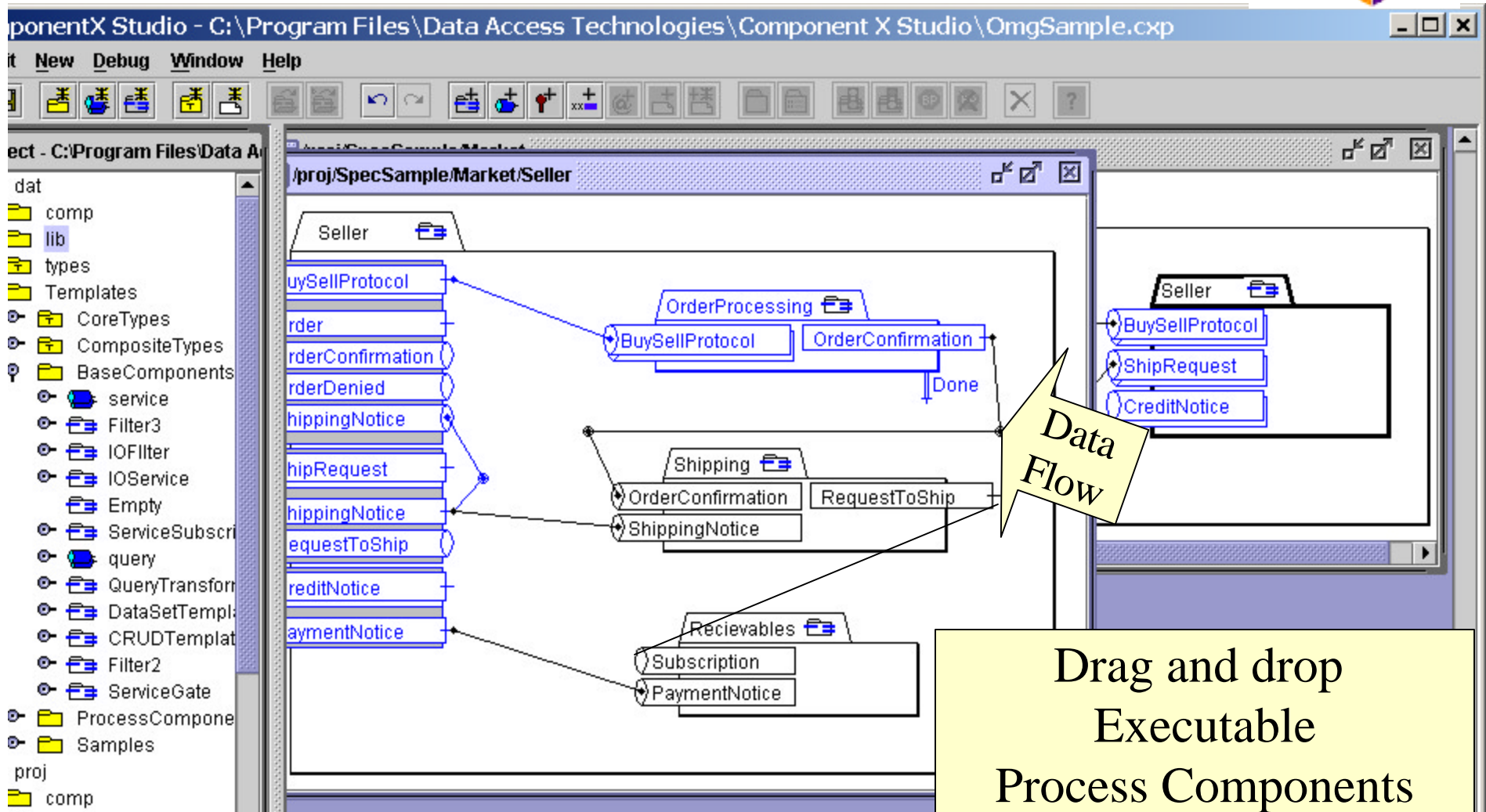


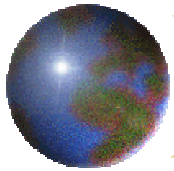
Activity diagram shows protocol



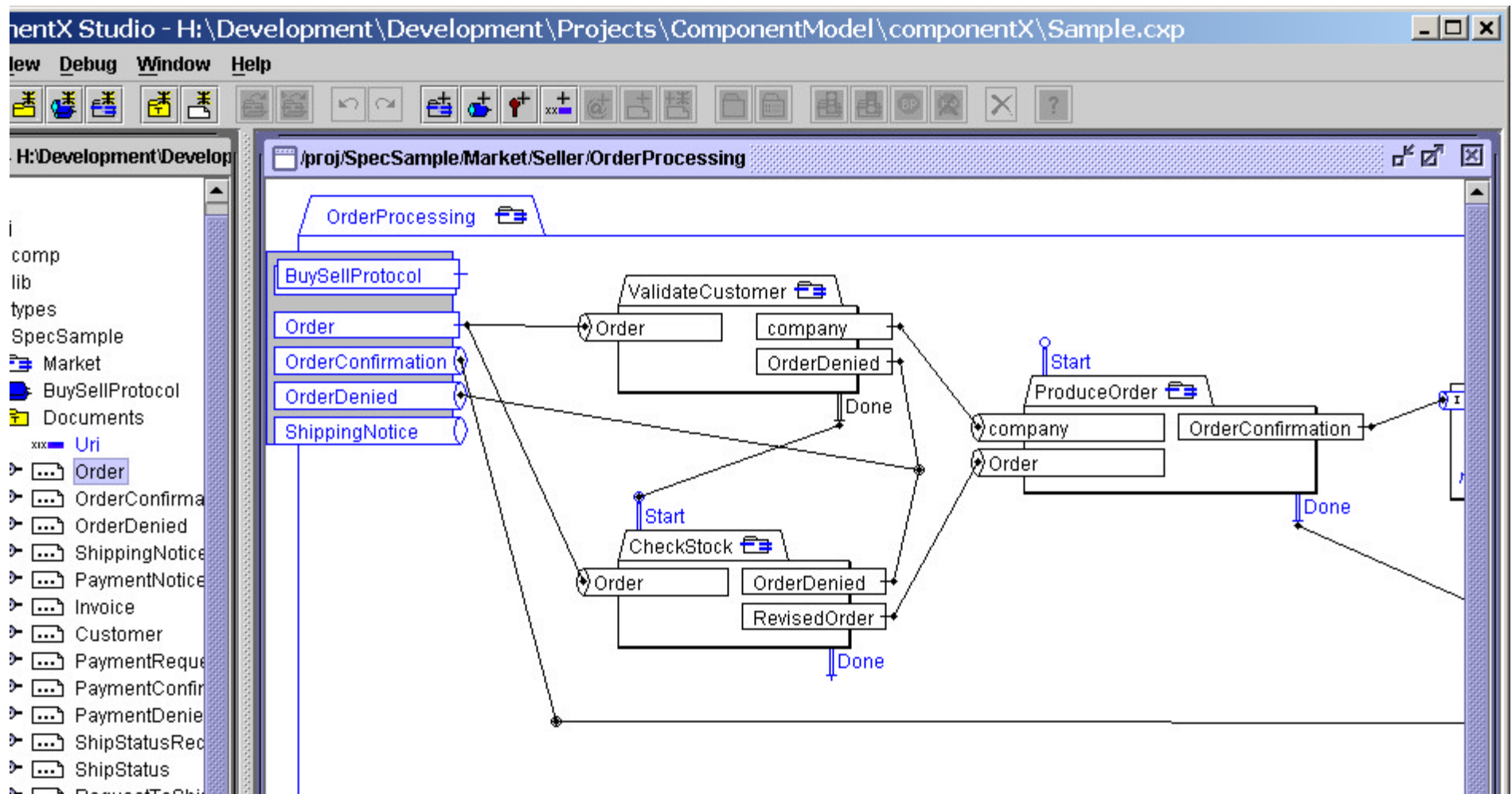


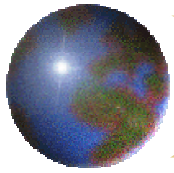
Drill down to sub-components & Activities



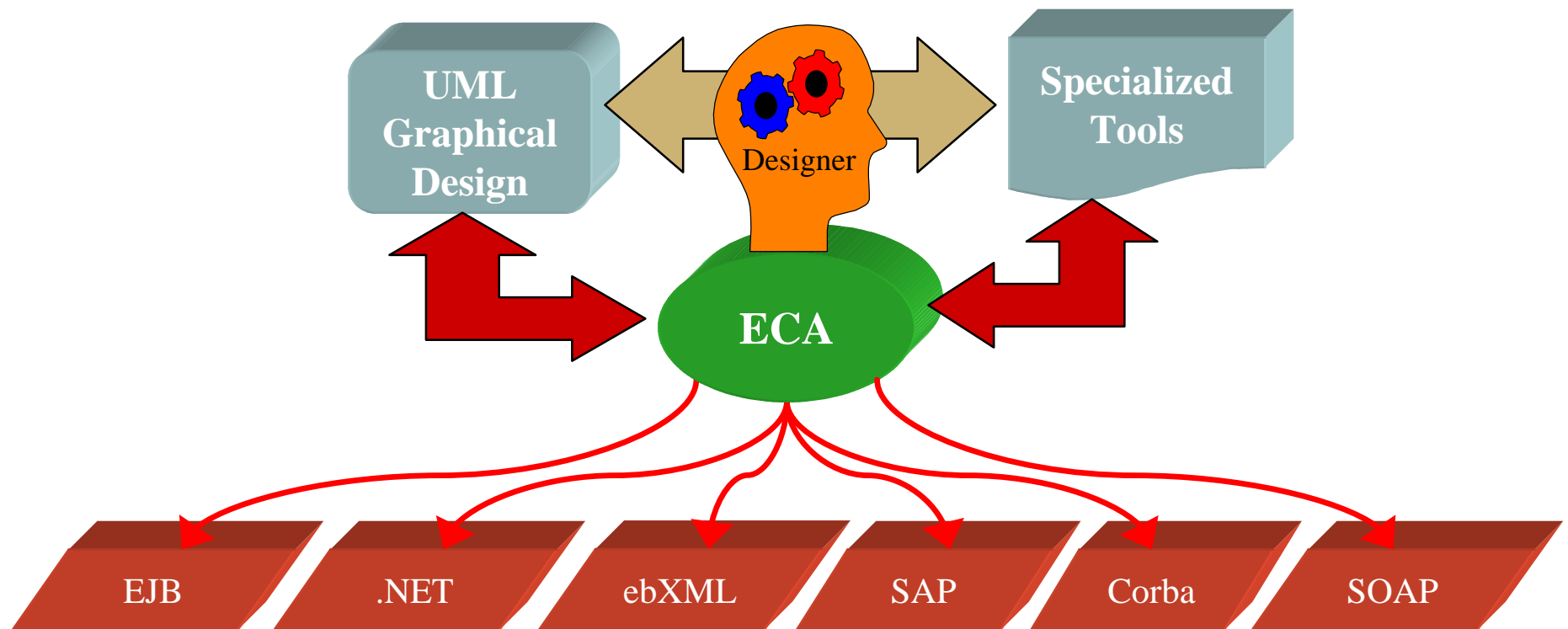


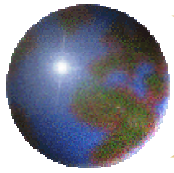
Recursive Composition



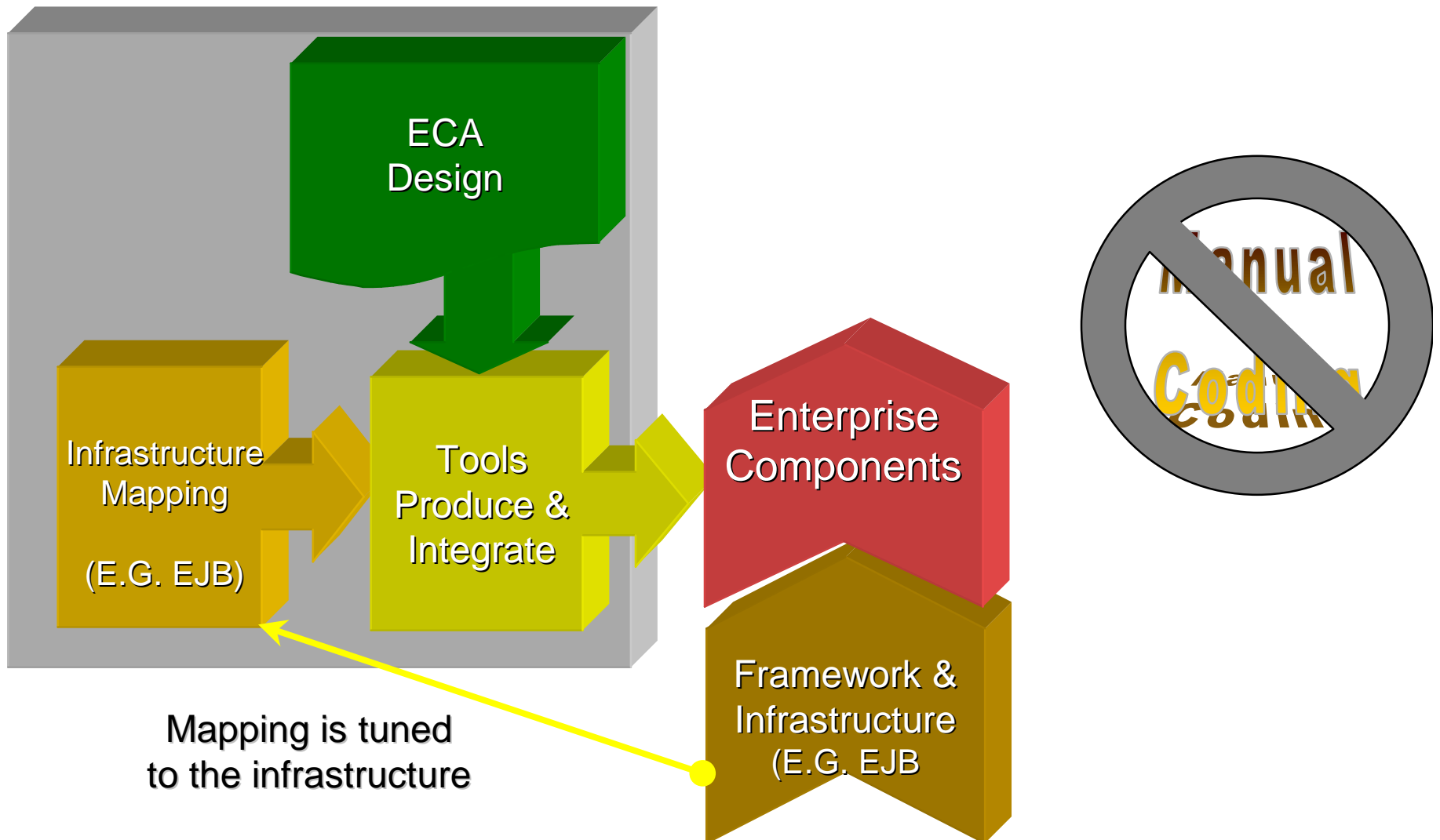


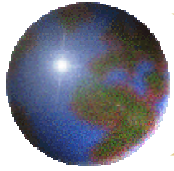
Technology Independence





Automated Model Based Design





Integration of Viewpoints

